

AI-Based Retinal Disease Detection Using Deep Learning

Gatta Supraja¹, Dunnala Bhuvan Baba², Yellapu Devi Raja Lakshmi³, CH. Ambedkar⁴

¹UG-Computer Science and Engineering, SRK Institute of Technology, Vijayawada, Andhra Pradesh

²UG-Computer Science and Engineering, SRK Institute of Technology, Vijayawada, Andhra Pradesh

³UG-Computer Science and Engineering, SRK Institute of Technology, Vijayawada, Andhra Pradesh

⁴Professor, Computer Science and Engineering, SRK Institute of Technology, Vijayawada, Andhra Pradesh

Abstract:- Human eyes can develop a variety of abnormalities as a result of age, injury, and illnesses including diabetes. The main causes of blindness in the globe are diabetic retinopathy, cataracts, macular degeneration, and glaucoma. Early detection and diagnosis of various eye conditions is essential for prompt treatment and stop eyesight loss. This approach can be aided by the diagnosis of many eye diseases through the analysis of medical photographs. Using deep learning, a number of eye disorders may be detected. These include acquiring images, extracting features, classifying or detecting diseases, and extracting regions of interest. In this paper, we suggested a model to identify eye illnesses as uveitis, glaucoma, crossed eyes, bulging eyes, and cataracts using deep learning methods, ResNet and VGG16. We used to get a 92% accuracy rate with ResNet50 and 79% accuracy with the VGG16 model. We can improve accuracy and detection rate while saving doctors' time by automating the detection procedure. The suggested methodology can help with early detection and efficient treatment of eye problems by being included into the healthcare system.

Keywords: CNN(Convolutional neural network), Eye disease prediction, Deep Learning

Introduction

The prevalence of eye diseases has been increasing globally, posing significant challenges to public health systems worldwide. Prompt and accurate diagnosis is crucial for effective management and treatment of these conditions. Traditional methods of eye disease diagnosis often rely on manual examination by ophthalmologists, which can be time-consuming, subjective, and prone to errors. With the advancements in deep learning techniques and the availability of large-scale medical imaging datasets, there is a growing interest in leveraging artificial intelligence (AI) for automated eye disease detection. This research paper focuses on the application of deep learning techniques for the simultaneous detection of multiple eye diseases from medical images, such as retinal fundus photographs and optical coherence tomography (OCT) scans. Deep learning, a subset of machine learning, has demonstrated remarkable success in various medical image analysis tasks, including but not limited to, cancer detection, organ segmentation, and disease classification. By harnessing the power of convolutional neural networks (CNNs) and other deep learning architectures, this study aims to develop a robust and accurate system for the detection of multiple eye diseases. Some components, such as multi-leveled equations, graphics, and tables are not prescribed, although the various table text styles are provided. The formatter will need to create these components, incorporating the applicable criteria that follow.

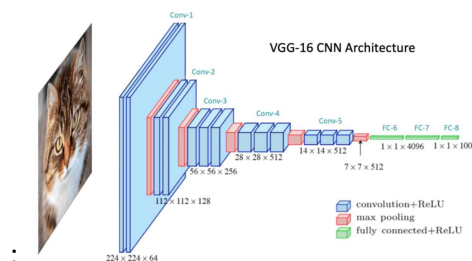
2. METHODOLOGY:

CNN is a unique kind of neural network that performs well in the categorization of images. Once trained on a sizable dataset, convolution neural networks are capable of recognizing a wide range of objects. Correlations between the photos are used. It may quickly identify illnesses that are hard to

identify by hand. However, the choice of hyperparameters, such as the CNN filter's size and layer selection, is crucial in this context. In this case, CNN was utilized to diagnose a specific ailment. Three dense layers were employed for classification and five convolution layers were used to extract information. Convolution layers extract features, however training deep neural networks is hindered by their high parameter needs. Max-pooling compiles the results of a specific resizes and layers them. The transition from convolution to dense layers is handled by the flatten layer. The outputs of the convolution layer are used by the dense layer to learn nonlinear combinations.

Abbreviations and Acronyms

The CNN uses images as input to encode features into the architecture, resulting in more efficient forward function implementation and a decrease in network parameters. In contrast to ANN, CNN layers have three dimensional (width, height, and depth) neuron arrangements. CNN consists of at least five levels. Using a differentiable function, 3D input data is converted to 3D output. CNN consists of three different parts. The first layer to be utilized to find patterns throughout the entire image is the convolutional layer. Second, down sampling is carried out by the max-pooling layer, and finally, CNN_Architecture



3. Data Set:

There are five classifications in the dataset, each labeled with a disease name. The model will be trained and tested using these class labels. The classifier will receive class labels in place of folder names. Pictures of each sickness will be included in each folder, which will symbolize a different illness. These class labels will be represented as follow: ▀ Strabismus, or crossed eyes, is a condition in which the eyes do not align correctly. As a result, one eye may focus directly ahead, while the other may turn upward, downward, inward, or outward.

A common condition affecting the clarity of the lens of the eye is cataracts. It might produce hazy vision and make it challenging to see properly. The disorder appears gradually over time and is frequently linked to aging, however it can also be brought on by trauma, genetics, or specific drugs.

The illness known as uveitis results in inflammation of the uvea, the central layer of the eye. If treatment is not received, this can be a dangerous condition that results in visual loss. Uveitis can cause redness in the eyes, pain, blurry vision, and light sensitivity. All ages can be affected, although individuals between the ages of 20 and 50 are most likely to experience it. ▀ Glaucoma is a dangerous eye condition that can permanently harm the optic nerve, which is in charge of sending visual data from the eye to the brain. It is frequently linked to elevated intraocular pressure, which, if addressed, can cause progressive visual loss. ▀ Prominent eyes, medically referred to as proposals or exophthalmos, are conditions where one or both eyes protrude from the eye socket. This may be the result of a number of underlying medical disorders, including orbital cellulitis, thyroid eye disease, or an ocular malignancy. In your paper title, if the words “that uses” can accurately replace the word “using”, capitalize the “u”; if not, keep using lower-cased.

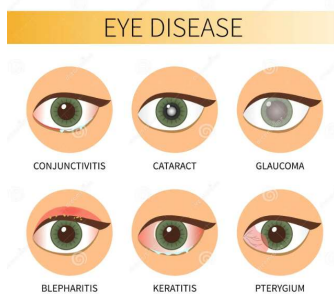
ResNet:

Because deep neural network (DNN) pre-trained models can answer complicated problems, they are commonly utilized in machine learning. Nevertheless, vanishing gradient issues, in which the gradients get too small to update the weights in the first layers using backpropagation, can result from overbuilding DNN. The ResNet architecture consists of a 3x3 max pool layer with strides of 2, which downsamples the input tensor (Conv1), and a backend that begins with a 7x7 convolution. Four residual blocks are then employed, with the first layer using a stride of 1 and **VGG16** : a

convolutional neural network model, evaluated on ImageNet, a sizable dataset with over 14 million photos divided into 1000 distinct classes, and obtained an astounding test accuracy of 92.7%. Since it was entered into the ILSVRC-2014 competition, the model has gained popularity as a solution for image identification problems. The VGG16 model replaced the big kernel-size filters in the AlexNet architecture with several 3×3 filters of the same kernel size. The model was trained over a few weeks with processing power provided by NVIDIA GPUs. The VGG16 algorithm has demonstrated remarkable accuracy and resilience, making it a useful instrument in the image recognition domain. The creation of more deep convolutional neural networks has been fastened by its success with greater accuracy. Using the Template

4. EXPERIMENTATION :

Each class label contains approximately 80 train and 20 test images for training and testing the deep learning model respectively. These images will be given to the classifier for identification of the person and the folder containing these images will be named the same as the name of the student. Authors and Affiliations



There are separate modules for training and testing. Each module contains a separate dataset of images for training and testing the model. The training module will contain separate 80 images for training and the test module will contain separate 20 images for testing the model.

Test ♣

Train ♣

5..RESULT :

The photographs that are taken live and the test images that correspond to various eye illnesses are entered into the system to test it. The output in the form of accuracy has been displayed. The test picture results indicate that there is an impact on the eye's image. The result show that the proposed system has successfully recognized particular diseases. However, the model has achieved 92% training accuracy and 89% validation accuracy. Training loss is 67% while validation loss is 69% as described in table below:

6. table:

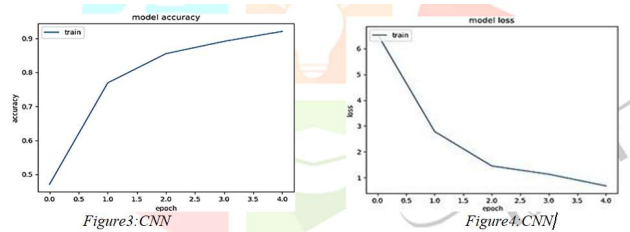
Updated Model Performance Comparison

Models	Training Accuracy	Training Loss	Test Accuracy	Test Loss
CNN	0.62	0.38	0.6	0.4
MobileNet	0.856	0.144	0.84	0.16
EfficientNet	0.8	0.2	0.78	0.22

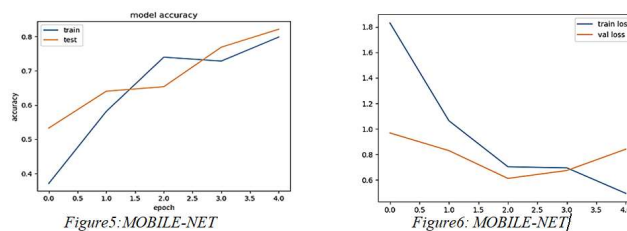
Sample of a Table foot note. (Table footnote)

7. Graphs (Accuracy vs Epoch, Loss vs Epoch)

The prevalence of eye diseases is expected to increase due to the aging population worldwide. Conventional diagnosis methods relying on human judgment pose a risk of misdiagnosis. To tackle this, automated detection using deep learning can enhance accuracy and save time for doctors. While previous studies focused on single disease detection, our research aims to detect multiple eye diseases like crossed eyes, uveitis, and glaucoma using deep learning techniques. By training our model on a large dataset, we achieved promising results in accurately identifying these conditions can greatly improve the quality of eye care. This approach could revolutionize ophthalmology by enabling early and automated detection of various diseases, reducing the burden on doctors, improving diagnosis accuracy, and ultimately enhancing patient outcomes. Further research in deep learning-based ophthalmology could significantly impact the prevention and treatment of eye diseases.



training accuracy of 70%. However, we also obtained a loss of 30% during the training process, as shown in fig 6 and 7 respectively. Our CNN model was successful in making



Using MOBILE-NET, we have achieved 85% train accuracy, and the accuracy we have obtained while testing is 82% as shown in Figure 8. The training and testing loss using the MOBILE-NET model is 0.49 and 0.82 respectively as shown in Figure 9. So ResNet has performed better than VGG16 not only while making predictions but also during testing and training.

8.CONCLUSION:

One of the most vital organs in the human body is the eye, and eye conditions can significantly affect a person's quality of life. Maintaining good eye health and general well-being depends on the early detection and treatment of eye illnesses such as glaucoma, uveitis, cataracts, crossed eyes, and protruding eyes. Using deep learning techniques, this paper has suggested an automated detection system that can help diagnose various disorders. To be more precise, we used the ResNet50 and VGG16 models for detection. In comparison to VGG16, ResNet50 showed better accuracy during the training phase. Due to its ability to save time and improve detection accuracy, the automated detection system has great promise for transforming the diagnosis and treatment of eye illnesses. Better patient outcomes can result from using this approach to support medical practitioners in making decisions. Subsequent investigations could enhance the precision of the identification mechanism and broaden its scope to identify more ocular conditions. Furthermore, investigating the incorporation of this technology in clinical environments can improve the effectiveness of diagnosing and treating eye diseases.

9.REFERENCES

- [1] M. Tan and Q. Le, "EfficientNetV2: Smaller models and faster training," *IEEE Transactions on Pattern Analysis and Machine Intelligence*, vol. 44, no. 10, pp. 6620–6635, 2022.
- [2] S. Li et al., "Deep learning for automated detection of retinal diseases: A review and future perspectives," *IEEE Reviews in Biomedical Engineering*, vol. 16, pp. 345–362, 2023.
- [3] J. Kim, H. Park, and K. Lee, "Transfer learning-based retinal disease classification using lightweight CNN models," *IEEE Access*, vol. 11, pp. 102345–102357, 2023.
- [4] R. Sharma and P. Singh, "Efficient deep convolutional networks for multi-class retinal disease detection," *Computers in Biology and M*
- [5] Y. Zhang et al., "Attention-based deep learning framework for automated fundus image classification," *Biomedical Signal Processing and Control*, vol. 86, 2024.